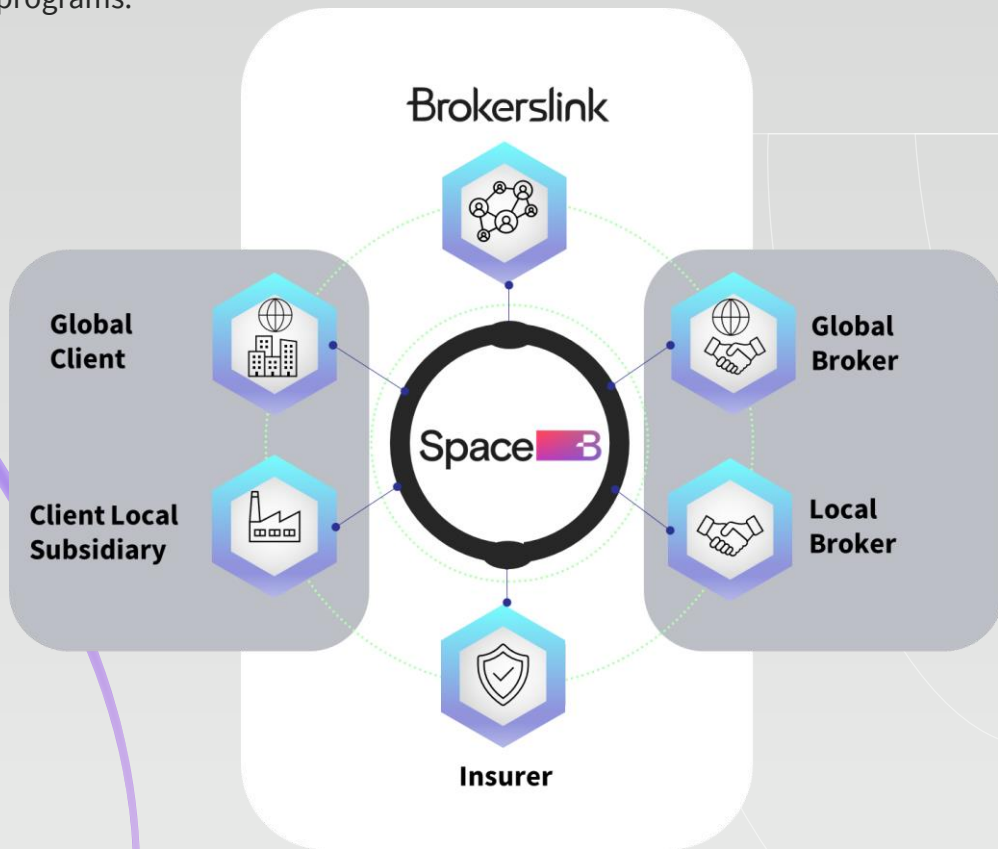


Space

Space B is a collaborative platform for international insurance management developed and **available exclusively to Brokerslink brokers and clients.**

Space B streamlines **multinational program set-up, placement, administration and coordination**, enabling brokers and their clients to effectively manage cross-border programs.



Key benefits of Space



Centralize

Enable a single point of truth for global customer data collection and insight



Streamline

Improve procurement process through end-to-end integration with clients and carriers, ensuring harmonisation, full compliance and data security

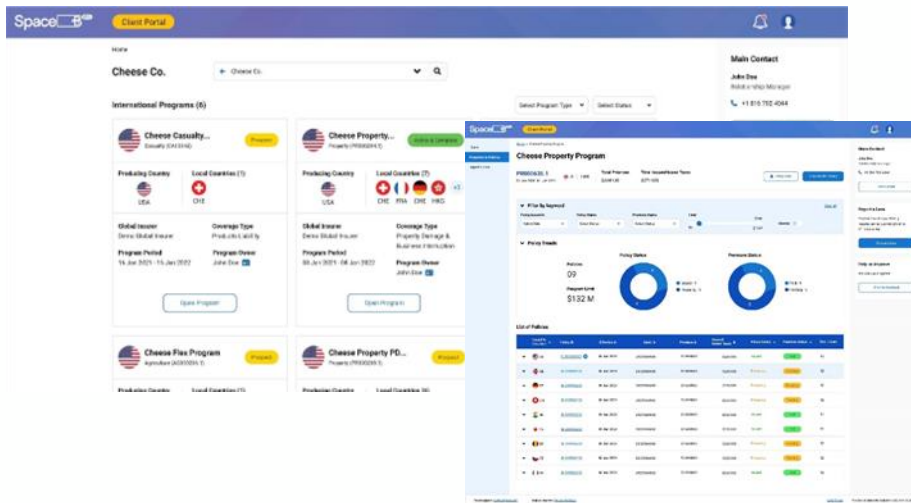








Optimize

Optimize cost and coverage monitoring through transparent and reliable risk mapping & global reporting

Brokerslink

Space B is a complete platform for the management of international programs:



-  Exposure Management
-  Program Structuring
-  Coverage Management
-  Cost Management
-  Global Coordination
-  Monitoring & Reporting

Boost your international risk management with Brokerslink

Founded in 2004, Brokerslink is a dynamic global broking company with a presence in 134 countries, fostering a vast interconnected community of insurance professionals and handling a large portfolio of more than 65 billion USD Gross Written Premium.

The majority of our brokers are Brokerslink shareholders and exclusive Brokerslink representatives in their market. The shared equity creates a unity of purpose and vision, that does not compromise the independence or local focus of each broker firm that is embedded in our collaborative ecosystem.

45,000+

professionals

134

countries

\$65+ billion

premium & consulting fees

Contact us to learn more:

Anne Collette

Business Development & Partnerships Director
anne.collette@brokerslink.com